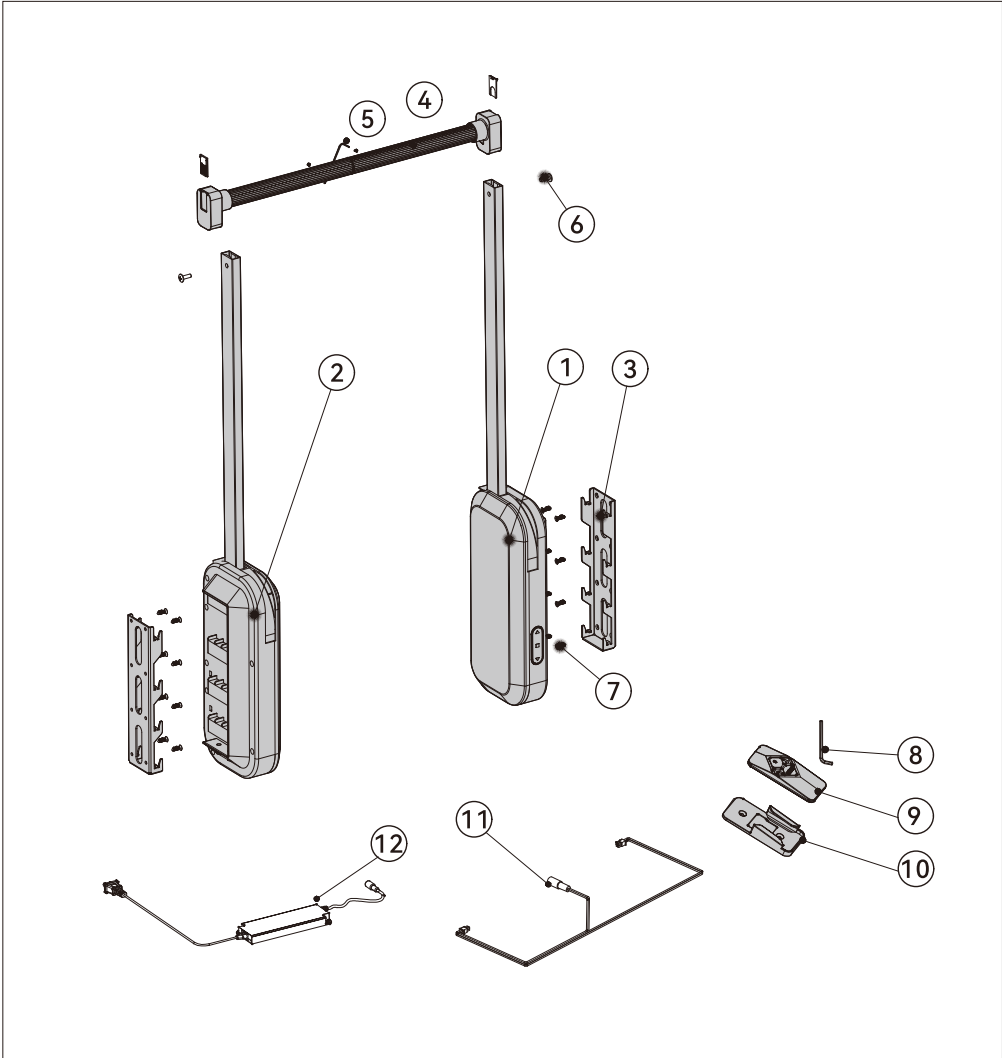
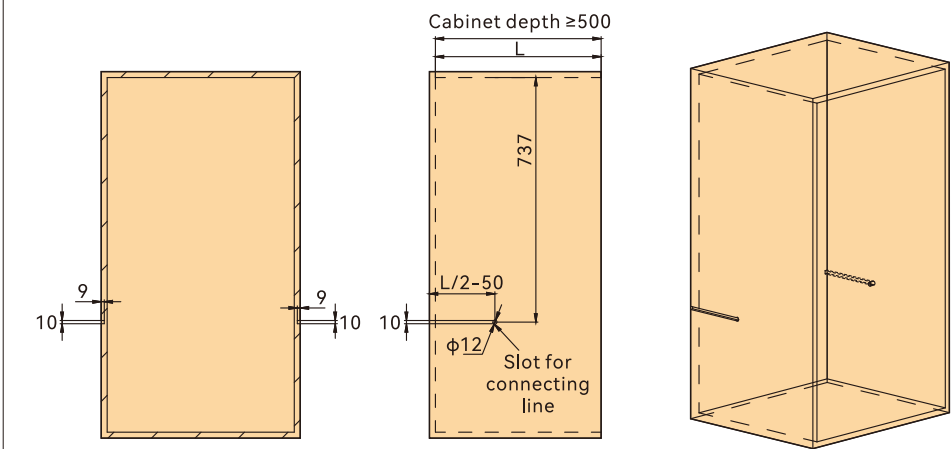


Accessories list as below



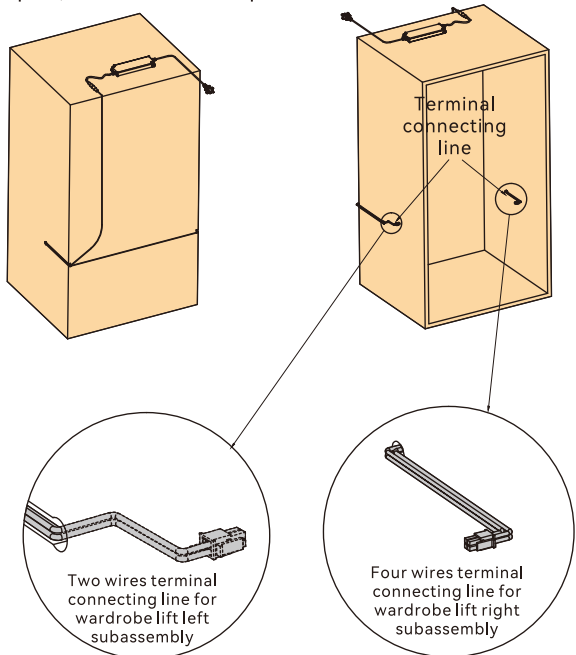
No.	①	②	③	④	⑤	⑥	⑦	⑧	⑨	⑩	⑪	⑫
DESC.	Right subassembly	Left subassembly	Assembly shelf	Middle rob	Decorative cover of rob connector	M6*35 flat head screw	ST4*16 countersunk head self-lapping screw	3.0mm Alley key	Remote control	Base for remote control	Terminal connecting line	Power cord
QTY	1	1	2	1	2	2	16	1	1	1	1	1

Cabinet parameters



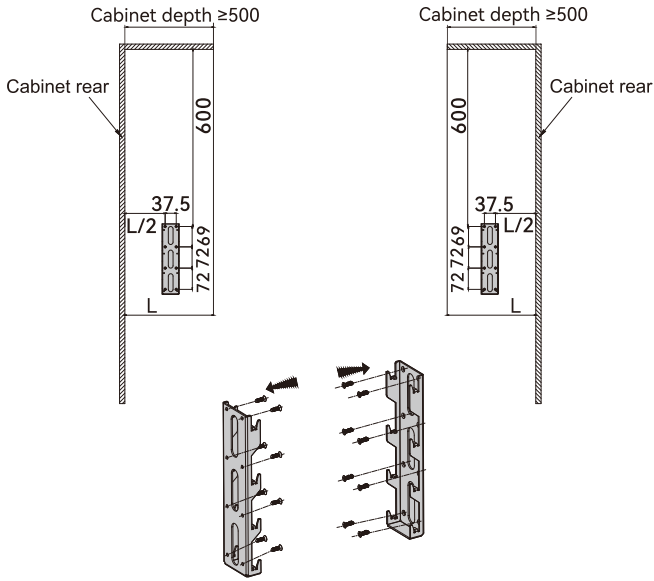
Installation step

1. Wiring the connecting line at the back of cabinet, let two terminals of the line separate as two ways at the spots, then cross the side panel and enter to the cabinet.



1

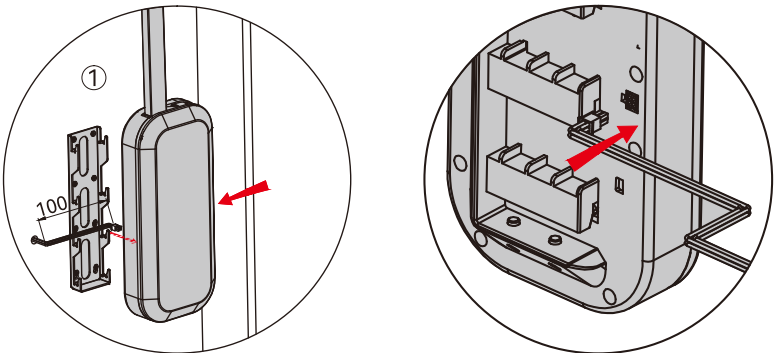
2. Install the left/right assembly-shelf on the two inner side panels of cabinet, mounting dimension as below picture shows.



2

3.1 Pull out the right terminal connecting line over 150mm from spot,insert the terminal to motherboard of the right subassembly rear.

3.2 Use one hand to slide on the right subassembly to the assembly shelf, use another hand to straighten the connecting line and do not clamp it during sliding on. Let the right subassembly slide in place.Then tighten the two set screws with alley key.

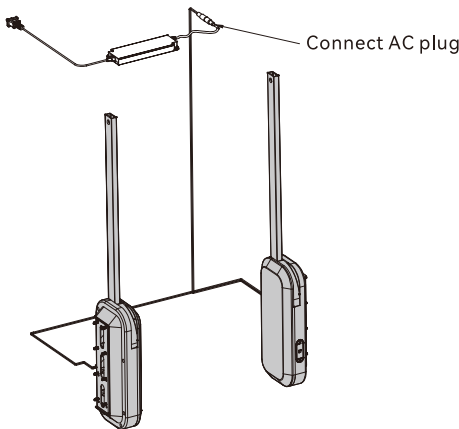


3

4.1 Similarly, pull out the left terminal connecting line over 150mm from spot,insert the terminal to motherboard of the left subassembly rear.

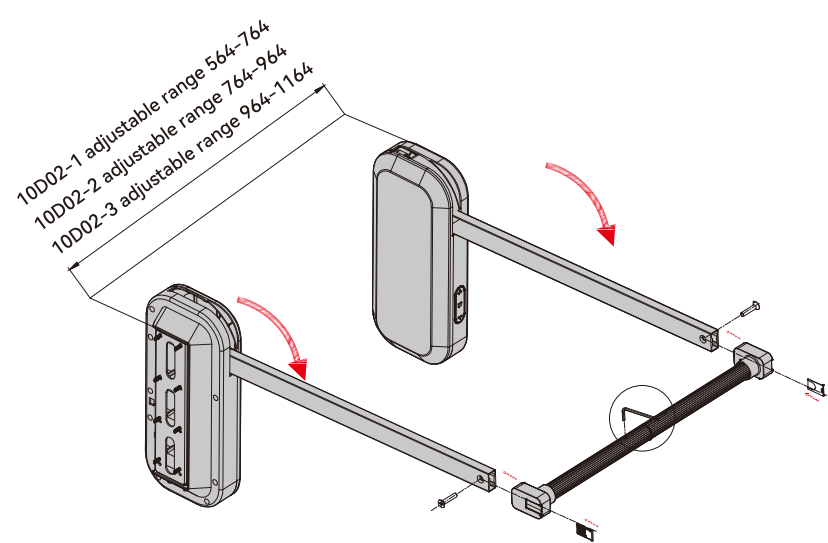
4.2 Use one hand to slide on the left subassembly to the assembly shelf, use another hand to straighten the connecting line and do not clamp it during sliding on. Let the left subassembly slide in place.Then tighten the two set screws with alley key.

5.Connect the plug of the terminal connecting line to the plug of the power cord



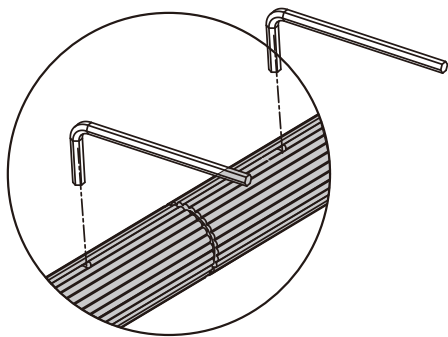
4

6.Plug in the power cord and turn it on, use remote control or sensor touch control to pull down the left/right rods to 90 degree,adjust the middle rod to appropriate width, then insert it to left/right rods and fix it with screws. Clip on the decorative cover in the end.



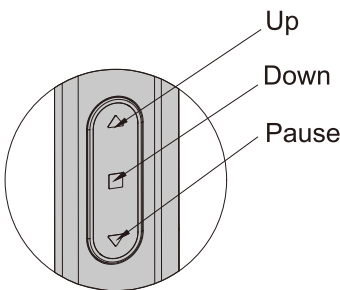
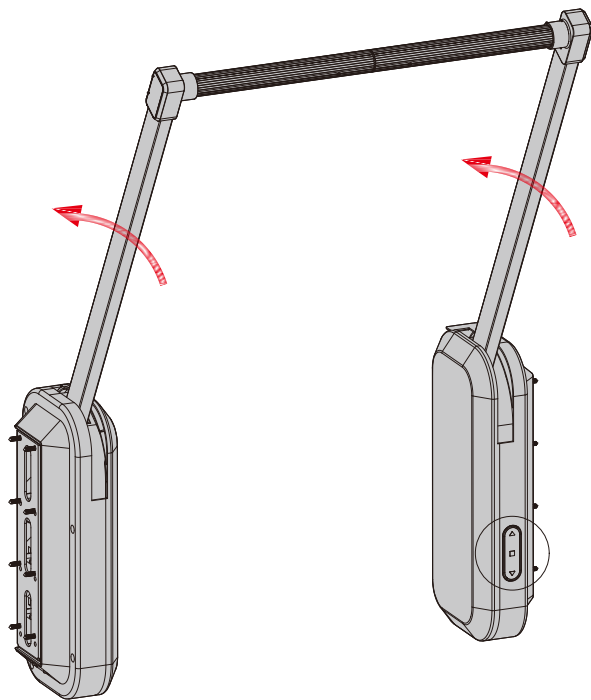
6

7. Adjust the middle rod to appropriate width, then fastened by allen key



7

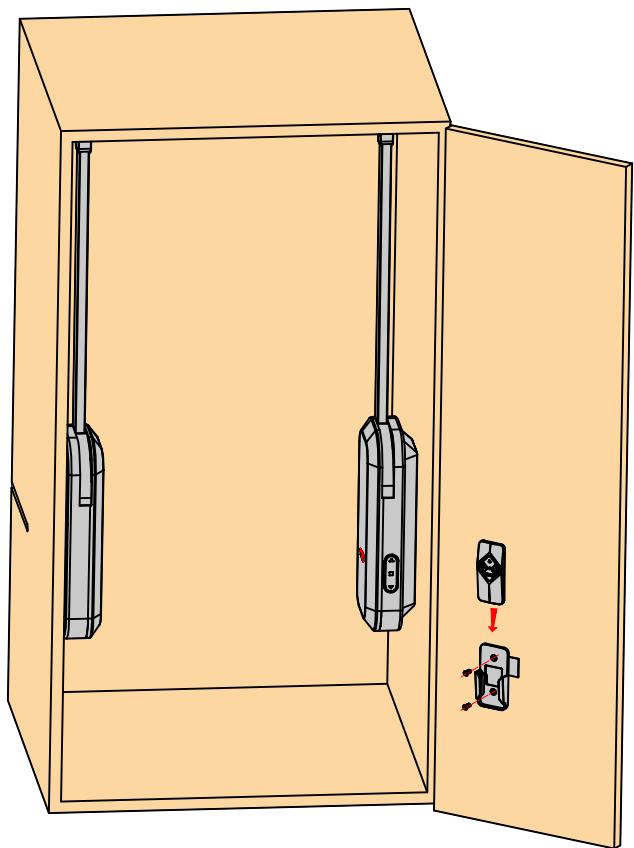
8. Test the product after installation. Use remote control or sensor touch control to rise the rod. It will stop automatically when it rises to the top. Press the down button to drop the rod. Or press the pause button to stop it during moving down. When the remote control or sensor control works normally, the testing is completed.



Caution: make sure both right/left subassemblies plug in power before turning on the wardrobe lift. Otherwise, the middle rod will be damaged when only one side electrical machinery works.

8

9.Remote control base installation: Two ways, one way is to stick the base with 3M sticker on the door panel; another way is to fasten the base with screw on the door.



Caution: Put back the remote control after using. To avoid collision, do not control the wardrobe lift when the cabinet door is closed.

9